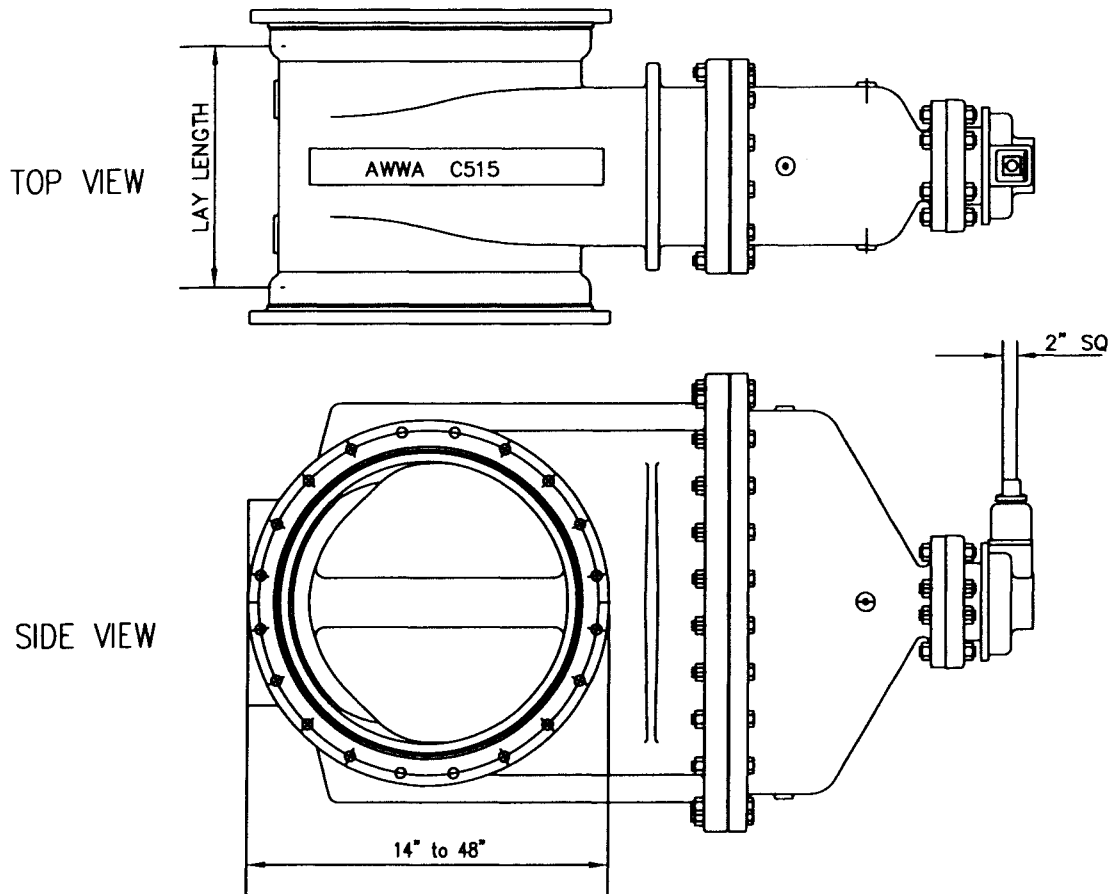


NOTES

1. VALVES SHALL BE AMERICAN FLOW CONTROL'S SERIES 2500 DUCTILE IRON RESILIENT WEDGE GATE VALVE or CITY APPROVED EQUAL.
2. ALL SURFACES OF THE VALVE BODY AND BONNET SHALL HAVE A FUSION-BONDED EPOXY COATING APPLIED PRIOR TO ASSEMBLY.
3. DIRECT BURY SIDE MOUNTED VALVES SHALL BE BEVEL GEARED AND ON PIPES GREATER THAN 12"Ø.
4. VALVES INSTALLED ON MAINS IN THE NORTH-SOUTH DIRECTION SHALL HAVE THE OPERATING NUT ON THE EAST SIDE.
5. VALVES INSTALLED ON MAINS IN THE EAST-WEST DIRECTION SHALL HAVE THE OPERATING NUT ON THE NORTH SIDE.
6. WHEN VALVES ARE CONNECTED TO A FLxFL TEE, 6" SPOOLS SHALL BE INSTALLED BETWEEN THE TEE AND VALVE.
7. PROVIDE A CITY APPROVED VALVE EXTENSION, WITH A RISER CAN, FOR VALVES DEEPER THAN 6.0 FEET. HEIGHT OF EXTENSION SHALL TERMINATE AT 1.5 FEET TO 4.0 FEET BELOW GRADE.
8. A 10 AWG SINGLE STRAND, SOFT DRAWN COPPER WIRE SHALL BE INSTALLED AS SHOWN IN CITY OF YUBA CITY STANDARD DETAIL W4.



MECHANICAL JOINT ENDS AND BEVEL GEAR

SIDE MOUNTED RESILIENT WEDGE GATE VALVE

DATE	REVISIONS	BY

CITY OF YUBA CITY	
STANDARD DETAIL	
W18	
APPROVED	7/21/09 DATE